



# *AMERICAN*

**DESIGN  
MANUFACTURING  
INTEGRATION  
EFFECTIVE JULY 1, 2019**

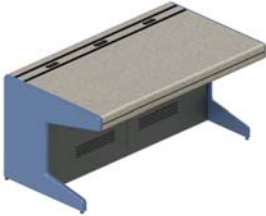
# AMERICON COMMERCIAL FURNITURE AND ACCESSORIES CATALOG

## JULY 2019



Part No.	OMNI SERIES LAMINATE BASE WORKSTATIONS	Price
1ER2	24" OMNI SERIES WORKSTATION	2,645.00
1ER3	36" OMNI SERIES WORKSTATION	2,900.00
1ER42	42" OMNI SERIES WORKSTATION	3,055.00
1ER4	48" OMNI SERIES WORKSTATION	3,220.00
1ER5	60" OMNI SERIES WORKSTATION	3,654.00
1ER6	72" OMNI SERIES WORKSTATION	3,988.00
1ERSTOR-18	18" OMNI SERIES STORAGE MODULE	1,991.00
1ERSTOR-24	24" OMNI SERIES STORAGE MODULE	2,257.00
1ERSTOR-36	36" OMNI SERIES STORAGE MODULE	2,523.00
1ERD-12	12" OMNI SERIES DIAGONAL CORNER MODULE	2,657.00
1ERD-18	18" OMNI SERIES DIAGONAL CORNER MODULE	2,923.00
1ERD-24	24" OMNI SERIES DIAGONAL CORNER MODULE	3,189.00

WORKSTATIONS INCLUDE FRONT & REAR ACCESS THROUGH LAMINATED DOORS, ADJUSTABLE LEVELING GLIDES, POWER STRIPS, WIRE GROMMETS AND J-TRACK CABLE MANAGEMENT



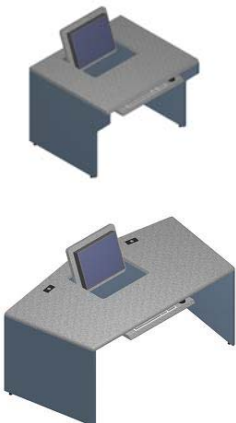
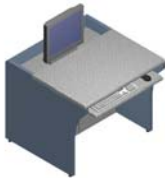
Part No.	ERGONAUT SERIES STEEL BASE WORKSTATIONS	Price
1ERG2	24" ERGONAUT SERIES WORKSTATION (with OMNI-TRAK)	2,950.00
1ERG3	36" ERGONAUT SERIES WORKSTATION (with OMNI-TRAK)	3,200.00
1ERG42	42" ERGONAUT SERIES WORKSTATION (with OMNI-TRAK)	3,350.00
1ERG4	48" ERGONAUT SERIES WORKSTATION (with OMNI-TRAK)	3,250.00
1ERG5	60" ERGONAUT SERIES WORKSTATION (with OMNI-TRAK)	3,650.00
1ERG6	72" ERGONAUT SERIES WORKSTATION (with OMNI-TRAK)	4,300.00
1ERGSTOR-18	18" ERGONAUT SERIES STORAGE MODULE (with OMNI-TRAK)	2,300.00
1ERGSTOR-24	24" ERGONAUT SERIES STORAGE MODULE (with OMNI-TRAK)	2,550.00
1ERGSTOR-36	36" ERGONAUT SERIES STORAGE MODULE (with OMNI-TRAK)	2,950.00
1ERGD-12	12" ERGONAUT SERIES DIAGONAL CORNER MODULE (with OMNI-TRAK)	2,950.00
1ERGD-18	18" ERGONAUT SERIES DIAGONAL CORNER MODULE (with OMNI-TRAK)	3,200.00
1ERGD-24	24" ERGONAUT SERIES DIAGONAL CORNER MODULE (with OMNI-TRAK)	3,500.00

WORKSTATIONS INCLUDE TUBULAR STEEL FRAMES, FRONT & REAR ACCESS THROUGH VENTED STEEL DOORS, ADJUSTABLE LEVELING GLIDES, OMNI-TRAK RAIL SYSTEM, WIRE GROMMETS AND J-TRACK CABLE MANAGEMENT



Part No.	COMMUNICATOR SERIES	Price
<b>BASIC COMMUNICATOR</b>		
PCP1	36" COMMUNICATOR SERIES WORKSTATION	2,173.00
PCP2	48" COMMUNICATOR SERIES WORKSTATION	3,383.00
PCP3	60" COMMUNICATOR SERIES WORKSTATION	4,230.00
PCP4	72" COMMUNICATOR SERIES WORKSTATION	4,835.00
<b>COMMUNICATOR SERIES WITH MONITOR WELL</b>		
PCV1	36" COMMUNICATOR SERIES WORKSTATION WITH MONITOR WELL	2,173.00
PCV2	48" COMMUNICATOR SERIES WORKSTATION WITH MONITOR WELL	3,383.00
PCV3	60" COMMUNICATOR SERIES WORKSTATION WITH MONITOR WELL	4,230.00
PCV4	72" COMMUNICATOR SERIES WORKSTATION WITH MONITOR WELL	4,835.00
<b>COMMUNICATOR FILLER BRIDGES</b>		
PCP-12	12" COMMUNICATOR SERIES FILLER	363.00
PCP-18	18" COMMUNICATOR SERIES FILLER	605.00
PCP-24	24" COMMUNICATOR SERIES FILLER	847.00
PCPW-12	12" COMMUNICATOR SERIES PIE-SHAPE FILLER	605.00
PCPW-18	18" COMMUNICATOR SERIES PIE-SHAPE FILLER	787.00
PCPW-24	24" COMMUNICATOR SERIES PIE-SHAPE FILLER	1,089.00

INCLUDES J-TRACK CABLE MANAGEMENT, POWER STRIP, WIRE GROMMETS AND ADJUSTABLE GLIDES  
POWER-COMMUNICATIONS POPUP AND ARTICULATING KEYBOARD TRAYS MUST BE ORDERED SEPARATELY

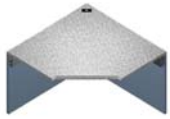


Part No.	COMMUNICATOR SERIES WITH FLIP SCREEN	Price
IFS3	36" COMMUNICATOR SERIES WORKSTATION WITH FLIP-SCREEN	2,420.00
IFS4	48" COMMUNICATOR SERIES WORKSTATION WITH FLIP-SCREEN	3,268.00
IFS5	60" COMMUNICATOR SERIES WORKSTATION WITH FLIP-SCREEN	4,118.00
IFS6	72" COMMUNICATOR SERIES WORKSTATION WITH FLIP-SCREEN	4,969.00
COOR60T	60" COORDINATOR TRAPEZOID WORKSTATION WITH FLIP-SCREEN	3,395.00
COOR72T	72" COORDINATOR TRAPEZOID WORKSTATION WITH FLIP-SCREEN	3,695.00
COOR84T	84" COORDINATOR TRAPEZOID WORKSTATION WITH FLIP-SCREEN	3,995.00
1FSSTOR-18	18" COMMUNICATOR SERIES STORAGE MODULE	1,516.00
1FSSTOR-24	24" COMMUNICATOR SERIES STORAGE MODULE	1,819.00
1FSSTOR-36	36" COMMUNICATOR SERIES STORAGE MODULE	2,221.00
1FSDC-12	12" COMMUNICATOR SERIES DIAGONAL CORNER MODULE WITH FLIP-SCREEN	3,026.00
1FSDC-18	18" COMMUNICATOR SERIES DIAGONAL CORNER MODULE WITH FLIP-SCREEN	3,329.00
1FSDC-24	24" COMMUNICATOR SERIES DIAGONAL CORNER MODULE WITH FLIP-SCREEN	3,688.00
FLIP	ADDITIONAL FLIP SCREEN OPTION (INTEGRATED)	350.00

INCLUDES J-TRACK CABLE MANAGEMENT, POWER STRIP, WIRE GROMMETS AND ADJUSTABLE GLIDES  
ARTICULATING KEYBOARD TRAYS MUST BE ORDERED SEPARATELY

# AMERICON COMMERCIAL FURNITURE AND ACCESSORIES CATALOG

## JULY 2019



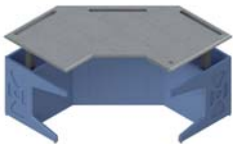
Part No.	90 DEGREE SQUARE BASES FOR MODULAR FURNITURE	Price
B4848	48" x 48" SQUARE BASE FOR 27" RETURN DEPTH	847.00
B484830S	48" x 48" SQUARE BASE FOR 30" RETURN DEPTH	775.00
B484836S	48" x 48" SQUARE BASE FOR 36" RETURN DEPTH	850.00
B6060	60" X 60" SQUARE BASE FOR 27" RETURN DEPTH	932.00
B606030S	60" X 60" SQUARE BASE FOR 30" RETURN DEPTH	845.00
B606036S	60" X 60" SQUARE BASE FOR 36" RETURN DEPTH	920.00



Part No.	90 DEGREE COCKPIT-STYLE BASES FOR DISPATCH	Price
B4827D	48" x 48" DIAGONAL BASE FOR 27" RETURN DEPTH	1,375.00
B6027D	60" x 60" DIAGONAL BASE FOR 27" RETURN DEPTH	1,985.00
B7227D	72" x 72" DIAGONAL BASE FOR 27" RETURN DEPTH	2,595.00
B4830D	48" x 48" DIAGONAL BASE FOR 30" RETURN DEPTH	1,425.00
B6030D	60" x 60" DIAGONAL BASE FOR 30" RETURN DEPTH	2,035.00
B7230D	72" x 72" DIAGONAL BASE FOR 30" RETURN DEPTH	2,645.00
B4836D	48" x 48" DIAGONAL BASE FOR 36" RETURN DEPTH	1,475.00
B6036D	60" x 60" DIAGONAL BASE FOR 36" RETURN DEPTH	2,085.00
B7236D	72" x 72" DIAGONAL BASE FOR 36" RETURN DEPTH	2,695.00



Part No.	90 DEGREE SPLIT-LEVEL COCKPIT-STYLE BASES FOR DISPATCH	Price
B4827SPL	48" x 48" SPLIT-LEVEL DIAGONAL BASE FOR 27" RETURN DEPTH	1,775.00
B6027SPL	60" x 60" SPLIT-LEVEL DIAGONAL BASE FOR 27" RETURN DEPTH	2,385.00
B7227SPL	72" x 72" SPLIT-LEVEL DIAGONAL BASE FOR 27" RETURN DEPTH	2,995.00
B4830SPL	48" x 48" SPLIT-LEVEL DIAGONAL BASE FOR H 30" RETURN DEPTH	1,825.00
B6030SPL	60" x 60" SPLIT-LEVEL DIAGONAL BASE FOR 30" RETURN DEPTH	2,435.00
B7230SPL	72" x 72" SPLIT-LEVEL DIAGONAL BASE FOR 30" RETURN DEPTH	3,045.00
B4836SPL	48" x 48" SPLIT-LEVEL DIAGONAL BASE FOR 36" RETURN DEPTH	2,175.00
B6036SPL	60" x 60" SPLIT-LEVEL DIAGONAL BASE FOR 36" RETURN DEPTH	2,785.00
B7236SPL	72" x 72" SPLIT-LEVEL DIAGONAL BASE FOR 36" RETURN DEPTH	3,395.00



Part No.	SIT/STAND LIFT OPTIONS	Price
ADJ-LEV	LEVER ADJUSTABLE WORKSURFACE	963.00
ADJ-MAN	CRANK ADJUSTABLE WORKSURFACE	963.00
ADJ-MOTOR	MOTORIZED HYDRAULIC FULL-LIFT SYSTEM (750 LBS)	2,173.00
ADJ-MOTORH	MOTORIZED HYDRAULIC FULL-LIFT SYSTEM (2000 LBS)	3,625.00
ADJ-MOTOR	MOTORIZED WORKSURFACE LIFT SYSTEM (750 LBS)	2,173.00

INCLUDES J-TRACK CABLE MANAGEMENT, POWER STRIP, WIRE GROMMETS AND ADJUSTABLE GLIDES



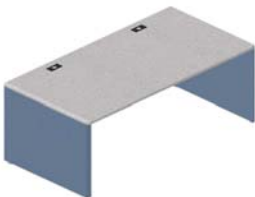
Part No.	COCKPIT-STYLE 120 DEGREE CONSOLES	Price
WK-120-6	6' 120 DEGREE WORKSTATION	2,465.00
WK-120S-6	6' 120 DEGREE WORKSTATION WITH LOW PROFILE SLATWALL	2,898.00
WK-120-7CB	6' 120 DEGREE WORKSTATION/ACCESSIBLE STORAGE CABINET/SLATWALL	5,080.00
WK-120-7	7' 120 DEGREE WORKSTATION	2,899.00
WK-120S-7	7' 120 DEGREE WORKSTATION WITH LOW PROFILE SLATWALL	3,334.00
WK-120-7CB	7' 120 DEGREE WORKSTATION/ACCESSIBLE STORAGE CABINET/SLATWALL	5,807.00
WK-120-8	8' 120 DEGREE WORKSTATION	3,334.00
WK-120S-8	8' 120 DEGREE WORKSTATION WITH LOW PROFILE SLATWALL	3,770.00
WK-120-8CB	8' 120 DEGREE WORKSTATION/ACCESSIBLE STORAGE CABINET/SLATWALL	6,534.00

1. OMNI 120 DEGREE WORKSTATIONS INCLUDE J-TRACK CABLE MANAGEMENT, SIX OUTLET POWER STRIPS, WIRE GROMMETS AND ADJUSTABLE LEVELING GLIDES.
2. CB VERSIONS ALSO INCLUDE CPU STORAGE ENCLOSURE WITH SHELF, FRONT & REAR ACCESS DOORS ALONG WITH SEGREGATED POWER AND DATA CABLE MANAGEMENT.



Part No.	VIGILANCE SERIES INTEGRATED TURRET WORKSTATIONS	Price
VIG-24	2' LINEAR WORKSTATION WITH INTEGRATED 4RU TURRET	2,900.00
VIG-36	3' LINEAR WORKSTATION WITH INTEGRATED 4RU TURRET	3,150.00
VIG-48	4' LINEAR WORKSTATION WITH TWO INTEGRATED 4RU TURRETS	4,000.00
VIG-60	5' LINEAR WORKSTATION WITH TWO INTEGRATED 4RU TURRETS	4,350.00
VIG-72	6' LINEAR WORKSTATION WITH THREE INTEGRATED 4RU TURRETS	5,150.00
VIG-120-72	6' COCKPIT-STYLE WORKSTATION WITH THREE INTEGRATED 4RU TURRETS	6,150.00
VIG-120-84	7' COCKPIT-STYLE WORKSTATION WITH THREE INTEGRATED 4RU TURRETS	6,750.00
VIG-120-96	8' COCKPIT-STYLE WORKSTATION WITH THREE INTEGRATED 4RU TURRETS	7,350.00
VIG-120-108	9' COCKPIT-STYLE WORKSTATION WITH FOUR INTEGRATED 4RU TURRETS	8,450.00
VIG-120-120	10' COCKPIT-STYLE WORKSTATION WITH FOUR INTEGRATED 4RU TURRETS	8,950.00
VIG-90-60	60" X 60" L-SHAPE WORKSTATION WITH THREE INTEGRATED 4RU TURRETS	6,150.00
VIG-90-66	66" X 66" L-SHAPE WORKSTATION WITH THREE INTEGRATED 4RU TURRETS	6,750.00

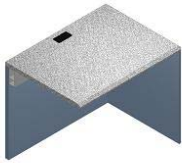
INCLUDES 4 RU RACK TURRETS, CPU STORAGE ENCLOSURE, 14 RU INTERIOR RACK MOUNTS, FRONT & REAR ACCESS, SEGREGATED CABLE MANAGEMENT, SIX OUTLET POWER STRIPS, SEGREGATED CABLE POWER & DATA MANAGEMENT, AND ADJUSTABLE LEVELING GLIDES.



Part No.	MODULAR FREESTANDING BASES	Price
MB4830	4' MODULAR BASE (30" DEEP)	1,795.00
MB4836	4' MODULAR BASE (36" DEEP)	2,095.00
MB6030	5' MODULAR BASE (30" DEEP)	2,095.00
MB6036	5' MODULAR BASE (36" DEEP)	2,395.00
MB7230	6' MODULAR BASE (30" DEEP)	2,395.00
MB7236	6' MODULAR BASE (36" DEEP)	2,695.00
MB8430	7' MODULAR BASE (30" DEEP)	2,695.00
MB8436	7' MODULAR BASE (36" DEEP)	2,995.00
MB9630	8' MODULAR BASE (30" DEEP)	2,995.00
MB9636	8' MODULAR BASE (36" DEEP)	3,295.00

# AMERICON COMMERCIAL FURNITURE AND ACCESSORIES CATALOG

## JULY 2019



Part No.	BASIC RETURNS	Price
B24	24" WIDE BASIC RETURN FOR 27" DEEP BASE	684.00
B2430	24" WIDE BASIC RETURN FOR 30" DEEP BASE	670.00
B2436	24" WIDE BASIC RETURN FOR 36" DEEP BASE	720.00
B36	36" WIDE BASIC RETURN FOR 27" DEEP BASE	757.00
B3630	36" WIDE BASIC RETURN FOR 30" DEEP BASE	635.00
B3636	36" WIDE BASIC RETURN FOR 36" DEEP BASE	785.00
B48	48" WIDE BASIC RETURN FOR 27" DEEP BASE	829.00
B4830	48" WIDE BASIC RETURN FOR 30" DEEP BASE	800.00
B4836	48" WIDE BASIC RETURN FOR 36" DEEP BASE	850.00
B60	60" WIDE BASIC RETURN FOR 27" DEEP BASE	810.00
B6030	60" WIDE BASIC RETURN FOR 30" DEEP BASE	860.00
B6036	60" WIDE BASIC RETURN FOR 36" DEEP BASE	910.00

INCLUDES J-TRACK CABLE MANAGEMENT, WIRE GROMMET AND ADJUSTABLE GLIDES  
SELECT THE PROPER DEPTH TO MATCH THE SUPPORTING FREESTANDING BASE



Part No.	TWO-DRAWER STORAGE RETURNS	Price
PED2-24	24" WIDE RETURN / FILE/FILE PEDESTAL FOR 27" DEEP BASE	1,265.00
PED2-2430	24" WIDE RETURN / FILE/FILE PEDESTAL FOR 30" DEEP BASE	1,200.00
PED2-2436	24" WIDE RETURN / FILE/FILE PEDESTAL FOR 36" DEEP BASE	1,250.00
PED2-36	36" WIDE RETURN / FILE/FILE PEDESTAL FOR 27" DEEP BASE	1,338.00
PED2-3630	36" WIDE RETURN / FILE/FILE PEDESTAL FOR 30" DEEP BASE	1,265.00
PED2-3636	36" WIDE RETURN / FILE/FILE PEDESTAL FOR 36" DEEP BASE	1,315.00
PED2-48	48" WIDE RETURN / FILE/FILE PEDESTAL FOR 27" DEEP BASE	1,410.00
PED2-4830	48" WIDE RETURN / FILE/FILE PEDESTAL FOR 30" DEEP BASE	1,250.00
PED2-4836	48" WIDE RETURN / FILE/FILE PEDESTAL FOR 36" DEEP BASE	1,310.00
PED2-60	60" WIDE RETURN / FILE/FILE PEDESTAL FOR 27" DEEP BASE	1,345.00
PED2-6030	60" WIDE RETURN / FILE/FILE PEDESTAL FOR 30" DEEP BASE	1,395.00
PED2-6036	60" WIDE RETURN / FILE/FILE PEDESTAL FOR 36" DEEP BASE	1,445.00

INCLUDES J-TRACK CABLE MANAGEMENT, WIRE GROMMETS AND ADJUSTABLE GLIDES  
SELECT THE PROPER DEPTH TO MATCH THE SUPPORTING FREESTANDING BASE



Part No.	THREE-DRAWER STORAGE RETURNS	Price
PED3-24	24" WIDE RETURN / BOX/BOX/FILE PEDESTAL FOR 27" DEEP BASE	1,295.00
PED3-2430	24" WIDE RETURN / BOX/BOX/FILE PEDESTAL FOR 30" DEEP BASE	1,225.00
PED3-2436	24" WIDE RETURN / BOX/BOX/FILE PEDESTAL FOR 36" DEEP BASE	1,275.00
PED3-36	36" WIDE RETURN / BOX/BOX/FILE PEDESTAL FOR 27" DEEP BASE	1,367.00
PED3-3630	36" WIDE RETURN / BOX/BOX/FILE PEDESTAL FOR 30" DEEP BASE	1,290.00
PED3-3636	36" WIDE RETURN / BOX/BOX/FILE PEDESTAL FOR 36" DEEP BASE	1,340.00
PED3-48	48" WIDE RETURN / BOX/BOX/FILE PEDESTAL FOR 27" DEEP BASE	1,440.00
PED3-4830	48" WIDE RETURN / BOX/BOX/FILE PEDESTAL FOR 30" DEEP BASE	1,355.00
PED3-4836	48" WIDE RETURN / BOX/BOX/FILE PEDESTAL FOR 36" DEEP BASE	1,405.00
PED3-60	60" WIDE RETURN / BOX/BOX/FILE PEDESTAL FOR 27" DEEP BASE	1,370.00
PED3-6030	60" WIDE RETURN / BOX/BOX/FILE PEDESTAL FOR 30" DEEP BASE	1,420.00
PED3-6036	60" WIDE RETURN / BOX/BOX/FILE PEDESTAL FOR 36" DEEP BASE	1,470.00

INCLUDES J-TRACK CABLE MANAGEMENT, WIRE GROMMETS AND ADJUSTABLE GLIDES  
SELECT THE PROPER DEPTH TO MATCH THE SUPPORTING FREESTANDING BASE



Part No.	SHELVING RETURNS	Price
PED3S-24	24" WIDE RETURN / STORAGE SHELVES FOR 27" DEEP BASE	904.00
PED3S-2430	24" WIDE RETURN / STORAGE SHELVES FOR 30" DEEP BASE	954.00
PED3S-2436	24" WIDE RETURN / STORAGE SHELVES FOR 36" DEEP BASE	1,004.00
PED3S-36	36" WIDE RETURN / STORAGE SHELVES FOR 27" DEEP BASE	969.00
PED3S-3630	36" WIDE RETURN / STORAGE SHELVES FOR 30" DEEP BASE	1,019.00
PED3S-3636	36" WIDE RETURN / STORAGE SHELVES FOR 36" DEEP BASE	1,069.00
PED3S-48	48" WIDE RETURN / STORAGE SHELVES FOR 27" DEEP BASE	1,034.00
PED3S-4830	48" WIDE RETURN / STORAGE SHELVES FOR 30" DEEP BASE	1,084.00
PED3S-4836	48" WIDE RETURN / STORAGE SHELVES FOR 36" DEEP BASE	1,134.00
PED3S-60	60" WIDE RETURN / STORAGE SHELVES FOR 27" DEEP BASE	1,099.00
PED3S-6030	60" WIDE RETURN / STORAGE SHELVES FOR 30" DEEP BASE	1,149.00
PED3S-6036	60" WIDE RETURN / STORAGE SHELVES FOR 36" DEEP BASE	1,199.00
PED3SDR-24	24" WIDE RETURN / SHELVING AND BOX DRAWER FOR 27" DEEP BASE	1,175.00
PED3SDR-2430	24" WIDE RETURN / SHELVING AND BOX DRAWER FOR 30" DEEP BASE	1,225.00
PED3SDR-2436	24" WIDE RETURN / SHELVING AND BOX DRAWER FOR 36" DEEP BASE	1,275.00
PED3SDR-36	36" WIDE RETURN / SHELVING AND BOX DRAWER FOR 27" DEEP BASE	1,240.00
PED3SDR-3630	36" WIDE RETURN / SHELVING AND BOX DRAWER FOR 30" DEEP BASE	1,290.00
PED3SDR-3636	36" WIDE RETURN / SHELVING AND BOX DRAWER FOR 36" DEEP BASE	1,340.00
PED3SDR-48	48" WIDE RETURN / SHELVING AND BOX DRAWERS FOR 27" DEEP BASE	1,305.00
PED3SDR-4830	48" WIDE RETURN / SHELVING AND BOX DRAWERS FOR 30" DEEP BASE	1,355.00
PED3SDR-4836	48" WIDE RETURN / SHELVING AND BOX DRAWERS FOR 36" DEEP BASE	1,405.00
PED3SDR-60	60" WIDE RETURN / SHELVING AND BOX DRAWERS FOR 27" DEEP BASE	1,370.00
PED3SDR-6030	60" WIDE RETURN / SHELVING AND BOX DRAWERS FOR 30" DEEP BASE	1,420.00
PED3SDR-6036	60" WIDE RETURN / SHELVING AND BOX DRAWERS FOR 36" DEEP BASE	1,470.00

INCLUDES J-TRACK CABLE MANAGEMENT, WIRE GROMMETS AND ADJUSTABLE GLIDES  
SELECT THE PROPER DEPTH TO MATCH THE SUPPORTING FREESTANDING BASE



# AMERICON COMMERCIAL FURNITURE AND ACCESSORIES CATALOG

## JULY 2019



Part No.	LATERAL STORAGE RETURNS	Price
LAT-2430	24" WIDE RETURN / LATERAL FILE PEDESTAL FOR 27" DEEP BASE	1,773.00
LAT-2430	24" WIDE RETURN / LATERAL FILE PEDESTAL FOR 30" DEEP BASE	1,660.00
LAT-2436	24" WIDE RETURN / LATERAL FILE PEDESTAL FOR 36" DEEP BASE	1,710.00
LAT-36	36" WIDE RETURN / LATERAL FILE PEDESTAL FOR 27" DEEP BASE	1,846.00
LAT-3630	36" WIDE RETURN / LATERAL FILE PEDESTAL FOR 30" DEEP BASE	1,725.00
LAT-3636	36" WIDE RETURN / LATERAL FILE PEDESTAL FOR 36" DEEP BASE	1,775.00
LAT-48	48" WIDE RETURN / LATERAL FILE PEDESTAL FOR 27" DEEP BASE	1,918.00
LAT-4830	48" WIDE RETURN / LATERAL FILE PEDESTAL FOR 30" DEEP BASE	1,790.00
LAT-4836	48" WIDE RETURN / LATERAL FILE PEDESTAL FOR 36" DEEP BASE	1,840.00
LAT-60	60" WIDE RETURN / LATERAL FILE PEDESTAL FOR 27" DEEP BASE	1,805.00
LAT-6030	60" WIDE RETURN / LATERAL FILE PEDESTAL FOR 30" DEEP BASE	1,855.00
LAT-6036	60" WIDE RETURN / LATERAL FILE PEDESTAL FOR 36" DEEP BASE	1,905.00

INCLUDES J-TRACK CABLE MANAGEMENT, WIRE GROMMETS AND ADJUSTABLE GLIDES  
SELECT THE PROPER DEPTH TO MATCH THE SUPPORTING FREESTANDING BASE



Part No.	FOUR DRAWER STORAGE FILE RETURNS	Price
DPD2-36	36" WIDE RETURN / TWO FILE / FILE PEDESTALS FOR 27" DEEP BASE	1,920.00
DPD2-3630	36" WIDE RETURN / TWO FILE / FILE PEDESTALS FOR 30" DEEP BASE	1,795.00
DPD2-3636	36" WIDE RETURN / TWO FILE / FILE PEDESTALS FOR 36" DEEP BASE	1,845.00
DPD2-48	48" WIDE RETURN / TWO FILE / FILE PEDESTALS FOR 27" DEEP BASE	1,991.00
DPD2-4830	48" WIDE RETURN / TWO FILE / FILE PEDESTALS FOR 30" DEEP BASE	1,860.00
DPD2-4836	48" WIDE RETURN / TWO FILE / FILE PEDESTALS FOR 36" DEEP BASE	1,910.00
DPD2-60	60" WIDE RETURN / TWO FILE / FILE PEDESTALS FOR 27" DEEP BASE	1,875.00
DPD2-6030	60" WIDE RETURN / TWO FILE / FILE PEDESTALS FOR 30" DEEP BASE	1,925.00
DPD2-6036	60" WIDE RETURN / TWO FILE / FILE PEDESTALS FOR 36" DEEP BASE	1,975.00

INCLUDES J-TRACK CABLE MANAGEMENT, WIRE GROMMETS AND ADJUSTABLE GLIDES  
SELECT THE PROPER DEPTH TO MATCH THE SUPPORTING FREESTANDING BASE



Part No.	SIX DRAWER STORAGE RETURNS	Price
DPD3-36	36" WIDE RETURN / TWO BOX/BOX / FILE PEDESTALS FOR 27" DEEP BASE	1,978.00
DPD3-3630	36" WIDE RETURN / TWO BOX/BOX / FILE PEDESTALS FOR 30" DEEP BASE	1,850.00
DPD3-3636	36" WIDE RETURN / TWO BOX/BOX / FILE PEDESTALS FOR 36" DEEP BASE	1,900.00
DPD3-48	48" WIDE RETURN / TWO BOX/BOX / FILE PEDESTALS FOR 27" DEEP BASE	2,052.00
DPD3-4830	48" WIDE RETURN / TWO BOX/BOX / FILE PEDESTALS FOR 30" DEEP BASE	1,915.00
DPD3-4836	48" WIDE RETURN / TWO BOX/BOX / FILE PEDESTALS FOR 36" DEEP BASE	1,965.00
DPD3-60	60" WIDE RETURN / TWO BOX/BOX / FILE PEDESTALS FOR 27" DEEP BASE	1,930.00
DPD3-6030	60" WIDE RETURN / TWO BOX/BOX / FILE PEDESTALS FOR 30" DEEP BASE	1,980.00
DPD3-6036	60" WIDE RETURN / TWO BOX/BOX / FILE PEDESTALS FOR 36" DEEP BASE	2,030.00

INCLUDES J-TRACK CABLE MANAGEMENT, WIRE GROMMETS AND ADJUSTABLE GLIDES  
SELECT THE PROPER DEPTH TO MATCH THE SUPPORTING FREESTANDING BASE



Part No.	COMBO STORAGE RETURNS	Price
DPED23-36	36" WIDE RETURN / COMBO PEDESTALS FOR 27" DEEP BASE	1,948.00
DPED23-3630	36" WIDE RETURN / COMBO PEDESTALS FOR 30" DEEP BASE	1,820.00
DPED23-3636	36" WIDE RETURN / COMBO PEDESTALS FOR 36" DEEP BASE	1,870.00
DPED23-48	48" WIDE RETURN / COMBO PEDESTALS FOR 27" DEEP BASE	2,021.00
DPED23-4830	48" WIDE RETURN / COMBO PEDESTALS FOR 30" DEEP BASE	1,885.00
DPED23-4836	48" WIDE RETURN / COMBO PEDESTALS 36" DEEP BASE	1,935.00
DPED23-60	60" WIDE RETURN / COMBO PEDESTALS 27" DEEP BASE	1,900.00
DPED23-6030	60" WIDE RETURN / COMBO PEDESTALS FOR 30" DEEP BASE	1,950.00
DPED23-6036	60" WIDE RETURN / COMBO PEDESTALS FOR 36" DEEP BASE	2,000.00

INCLUDES J-TRACK CABLE MANAGEMENT, WIRE GROMMETS AND ADJUSTABLE GLIDES  
SELECT THE PROPER DEPTH TO MATCH THE SUPPORTING FREESTANDING BASE



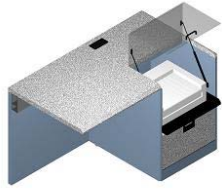
Part No.	CPU STORAGE RETURNS	Price
CPU-24	24" WIDE RETURN / CPU CABINET FOR 27" DEEP BASE	1,155.00
CPU-2430	24" WIDE RETURN / CPU CABINET FOR 30" DEEP BASE	1,205.00
CPU-2436	24" WIDE RETURN / CPU CABINET FOR 36" DEEP BASE	1,255.00
CPU-36	36" WIDE RETURN / CPU CABINET FOR 27" DEEP BASE	1,221.00
CPU-3630	36" WIDE RETURN / CPU CABINET FOR 30" DEEP BASE	1,270.00
CPU-3636	36" WIDE RETURN / CPU CABINET FOR 36" DEEP BASE	1,320.00
CPU-48	48" WIDE RETURN / CPU CABINET FOR 27" DEEP BASE	1,287.00
CPU-4830	48" WIDE RETURN / CPU CABINET FOR 30" DEEP BASE	1,335.00
CPU-4836	48" WIDE RETURN / CPU CABINET FOR 36" DEEP BASE	1,385.00
CPU-60	60" WIDE RETURN / CPU CABINET FOR 27" DEEP BASE	1,350.00
CPU-6030	60" WIDE RETURN / CPU CABINET FOR 30" DEEP BASE	1,400.00
CPU-6036	60" WIDE RETURN / CPU CABINET FOR 36" DEEP BASE	1,450.00
CPUDR-24	24" WIDE RETURN / CPU CABINET / BOX DRAWER FOR 27" DEEP BASE	1,425.00
CPUDR-2430	24" WIDE RETURN / CPU CABINET / BOX DRAWER FOR 30" DEEP BASE	1,476.00
CPUDR-2436	24" WIDE RETURN / CPU CABINET / BOX DRAWER FOR 36" DEEP BASE	1,526.00
CPUDR-36	36" WIDE RETURN / CPU CABINET / BOX DRAWER FOR 27" DEEP BASE	1,491.00
CPUDR-3630	36" WIDE RETURN / CPU CABINET / BOX DRAWER FOR 30" DEEP BASE	1,541.00
CPUDR-3636	36" WIDE RETURN / CPU CABINET / BOX DRAWER FOR 36" DEEP BASE	1,591.00
CPUDR-48	48" WIDE RETURN / CPU CABINET / BOX DRAWERS FOR 27" DEEP BASE	1,556.00
CPUDR-4830	48" WIDE RETURN / CPU CABINET / BOX DRAWERS FOR 30" DEEP BASE	1,606.00
CPUDR-4836	48" WIDE RETURN / CPU CABINET / BOX DRAWERS FOR 36" DEEP BASE	1,656.00
CPUDR-60	60" WIDE RETURN / CPU CABINET / BOX DRAWERS FOR 27" DEEP BASE	1,621.00
CPUDR-6030	60" WIDE RETURN / CPU CABINET / BOX DRAWERS FOR 30" DEEP BASE	1,671.00
CPUDR-6036	60" WIDE RETURN / CPU CABINET / BOX DRAWERS FOR 36" DEEP BASE	1,721.00

INCLUDES J-TRACK CABLE MANAGEMENT, WIRE GROMMETS, ADJUSTABLE GLIDES, RETRACTABLE CPU TRAY AND VENTED DOOR.  
SELECT THE PROPER DEPTH TO MATCH THE SUPPORTING FREESTANDING BASE



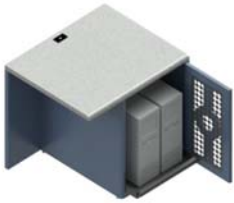
# AMERICON COMMERCIAL FURNITURE AND ACCESSORIES CATALOG

## JULY 2019



Part No.	PRINTER RETURNS	Price
PRT-24	24" WIDE RETURN / PRINTER ENCLOSURE FOR 27" DEEP BASE	1,416.00
PRT-2430	24" WIDE RETURN / PRINTER ENCLOSURE FOR 30" DEEP BASE	1,335.00
PRT-2436	24" WIDE RETURN / PRINTER ENCLOSURE FOR 36" DEEP BASE	1,385.00
PRT-36	36" WIDE RETURN / PRINTER ENCLOSURE FOR 27" DEEP BASE	1,525.00
PRT-3630	36" WIDE RETURN / PRINTER ENCLOSURE FOR 30" DEEP BASE	1,435.00
PRT-3636	36" WIDE RETURN / PRINTER ENCLOSURE FOR 36" DEEP BASE	1,485.00
PRT-48	48" WIDE RETURN / PRINTER ENCLOSURE FOR 27" DEEP BASE	1,597.00
PRT-4830	48" WIDE RETURN / PRINTER ENCLOSURE FOR 30" DEEP BASE	1,500.00
PRT-4836	48" WIDE RETURN / PRINTER ENCLOSURE FOR 36" DEEP BASE	1,550.00
PRT-60	60" WIDE RETURN / PRINTER ENCLOSURE FOR 27" DEEP BASE	1,515.00
PRT-6030	60" WIDE RETURN / PRINTER ENCLOSURE FOR 30" DEEP BASE	1,565.00
PRT-6036	60" WIDE RETURN / PRINTER ENCLOSURE FOR 36" DEEP BASE	1,615.00

INCLUDES J-TRACK CABLE MANAGEMENT, WIRE GROMMET, ADJUSTABLE GLIDES, ACRYLIC LID, PULLOUT TRAY, EXHAUST FAN AND STORAGE.  
SELECT THE PROPER DEPTH TO MATCH THE SUPPORTING FREESTANDING BASE



Part No.	DUAL CPU STORAGE RETURNS	Price
CPU2-24	24" WIDE RETURN / DUAL CPU CABINET FOR 27" DEEP BASE	1,426.00
CPU2-2430	24" WIDE RETURN / DUAL CPU CABINET FOR 30" DEEP BASE	1,386.00
CPU2-2436	24" WIDE RETURN / DUAL CPU CABINET FOR 36" DEEP BASE	1,443.00
CPU2-36	36" WIDE RETURN / DUAL CPU CABINET FOR 27" DEEP BASE	1,403.00
CPU2-3630	36" WIDE RETURN / DUAL CPU CABINET FOR 30" DEEP BASE	1,461.00
CPU2-3636	36" WIDE RETURN / DUAL CPU CABINET FOR 36" DEEP BASE	1,518.00
CPU2-48	48" WIDE RETURN / DUAL CPU CABINET FOR 27" DEEP BASE	1,478.00
CPU2-4830	48" WIDE RETURN / DUAL CPU CABINET FOR 30" DEEP BASE	1,535.00
CPU2-4836	48" WIDE RETURN / DUAL CPU CABINET FOR 36" DEEP BASE	1,593.00
CPU2-60	60" WIDE RETURN / DUAL CPU CABINET FOR 27" DEEP BASE	1,553.00
CPU2-6030	60" WIDE RETURN / DUAL CPU CABINET FOR 30" DEEP BASE	1,610.00
CPU2-6036	60" WIDE RETURN / DUAL CPU CABINET FOR 36" DEEP BASE	1,668.00
CPU2-24DR	24" WIDE RETURN / DUAL CPU CABINET/BOX DRAWER FOR 27" DEEP BASE	1,599.00
CPU2-2430DR	24" WIDE RETURN / DUAL CPU CABINET/BOX DRAWER FOR 30" DEEP BASE	1,657.00
CPU2-2436DR	24" WIDE RETURN / DUAL CPU CABINET/BOX DRAWER FOR 36" DEEP BASE	1,714.00
CPU2-36DR	36" WIDE RETURN / DUAL CPU CABINET/BOX DRAWER FOR 27" DEEP BASE	1,674.00
CPU2-3630DR	36" WIDE RETURN / DUAL CPU CABINET/BOX DRAWER FOR 30" DEEP BASE	1,732.00
CPU2-3636DR	36" WIDE RETURN / DUAL CPU CABINET/BOX DRAWER FOR 36" DEEP BASE	1,789.00
CPU2-48DR	48" WIDE RETURN / DUAL CPU CABINET/BOX DRAWERS FOR 27" DEEP BASE	1,749.00
CPU2-4830DR	48" WIDE RETURN / DUAL CPU CABINET/BOX DRAWERS FOR 30" DEEP BASE	1,806.00
CPU2-4836DR	48" WIDE RETURN / DUAL CPU CABINET/BOX DRAWERS FOR 36" DEEP BASE	1,864.00
CPU2-60DR	60" WIDE RETURN / DUAL CPU CABINET/BOX DRAWERS FOR 27" DEEP BASE	1,824.00
CPU2-6030DR	60" WIDE RETURN / DUAL CPU CABINET/BOX DRAWERS FOR 30" DEEP BASE	1,881.00
CPU2-6036DR	60" WIDE RETURN / DUAL CPU CABINET/BOX DRAWERS FOR 36" DEEP BASE	1,939.00

INCLUDES J-TRACK CABLE MANAGEMENT, WIRE GROMMETS, ADJUSTABLE GLIDES, RETRACTABLE CPU TRAY AND VENTED DOOR.  
SELECT THE PROPER DEPTH TO MATCH THE SUPPORTING FREESTANDING BASE



Part No.	ELECTRONICS ENCLOSURE RETURNS	Price
EIA-24	24" WIDE RETURN / 14 RU RACK CABINET FOR 27" DEEP BASE	1,426.00
EIA-2430	24" WIDE RETURN / 14 RU RACK CABINET FOR 30" DEEP BASE	1,386.00
EIA-2436	24" WIDE RETURN / 14 RU RACK CABINET FOR 36" DEEP BASE	1,443.00
EIA-36	36" WIDE RETURN / 14 RU RACK CABINET FOR 27" DEEP BASE	1,403.00
EIA-3630	36" WIDE RETURN / 14 RU RACK CABINET FOR 30" DEEP BASE	1,461.00
EIA-3636	36" WIDE RETURN / 14 RU RACK CABINET FOR 36" DEEP BASE	1,518.00
CPU-48	48" WIDE RETURN / 14 RU RACK CABINET FOR 27" DEEP BASE	1,478.00
EIA-4830	48" WIDE RETURN / 14 RU RACK CABINET FOR 30" DEEP BASE	1,535.00
EIA-4836	48" WIDE RETURN / 14 RU RACK CABINET FOR 36" DEEP BASE	1,593.00
EIA-60	60" WIDE RETURN / 14 RU RACK CABINET FOR 27" DEEP BASE	1,553.00
EIA-6030	60" WIDE RETURN / 14 RU RACK CABINET FOR 30" DEEP BASE	1,610.00
EIA-6036	60" WIDE RETURN / 14 RU RACK CABINET FOR 36" DEEP BASE	1,668.00
EIA-24DR	24" WIDE RETURN / 11 RU RACK CABINET/BOX DRAWER FOR 27" DEEP BASE	1,599.00
EIA-2430DR	24" WIDE RETURN / 11 RU RACK CABINET/BOX DRAWER FOR 30" DEEP BASE	1,657.00
EIA-2436DR	24" WIDE RETURN / 11 RU RACK CABINET/BOX DRAWER FOR 36" DEEP BASE	1,714.00
EIA-36DR	36" WIDE RETURN / 11 RU RACK CABINET/BOX DRAWER FOR 27" DEEP BASE	1,674.00
EIA-3630DR	36" WIDE RETURN / 11 RU RACK CABINET/BOX DRAWER FOR 30" DEEP BASE	1,732.00
EIA-3636DR	36" WIDE RETURN / 11 RU RACK CABINET/BOX DRAWER FOR 36" DEEP BASE	1,789.00
EIA-48DR	48" WIDE RETURN / 11 RU RACK CABINET/BOX DRAWER FOR 27" DEEP BASE	1,749.00
EIA-4830DR	48" WIDE RETURN / 11 RU RACK CABINET/BOX DRAWER FOR 30" DEEP BASE	1,806.00
EIA-4836DR	48" WIDE RETURN / 11 RU RACK CABINET/BOX DRAWER FOR 36" DEEP BASE	1,864.00
EIA-60DR	60" WIDE RETURN / 11 RU RACK CABINET/BOX DRAWER FOR 27" DEEP BASE	1,824.00
EIA-6030DR	60" WIDE RETURN / 11 RU RACK CABINET/BOX DRAWER FOR 30" DEEP BASE	1,881.00
EIA-6036DR	60" WIDE RETURN / 11 RU RACK CABINET/BOX DRAWER FOR 36" DEEP BASE	1,939.00

INCLUDES J-TRACK CABLE MANAGEMENT, WIRE GROMMETS, ADJUSTABLE GLIDES, EIA RETNA RAILS & ¼-20 SCREWS.  
SELECT THE PROPER DEPTH TO MATCH THE SUPPORTING FREESTANDING BASE



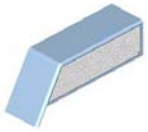
# AMERICON COMMERCIAL FURNITURE AND ACCESSORIES CATALOG

## JULY 2019



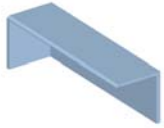
Part No.	SLOPED CROSSTALK HOODS	Price
CTSH-39	39" SLOPED HOOD FOR 2' RETURN	545.00
CTSH-51	51" SLOPED HOOD FOR 3' RETURN	581.00
CTSH-63	63" SLOPED HOOD FOR 4' RETURN	617.00
CTSH-75	75" SLOPED HOOD FOR 5' RETURN	653.00

SLOPED HOODS CREATE SPACIALITY IN CROWDED CALL CENTER ENVIRONMENTS  
SITS ON WORKSURFACE OF MODULAR FURNITURE



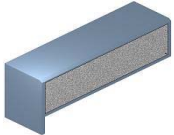
Part No.	SLOPED CROSSTALK STORAGE HOODS	Price
CTSH-39S	39" SLOPED STORAGE HOOD FOR 2' RETURN	835.00
CTSH-51S	51" SLOPED STORAGE HOOD FOR 3' RETURN	908.00
CTSH-63S	63" SLOPED STORAGE HOOD FOR 4' RETURN	980.00
CTSH-75	75" SLOPED STORAGE HOOD FOR 5' RETURN	1,052.00
FLOCK	FACE LOCK	36.00

STORAGE HOODS CAN BE ORDERED WITH EITHER FLIPPER OR OPTIONAL SLIDING DOORS FOR THE SAME PRICE  
SITS ON WORKSURFACE OF MODULAR FURNITURE



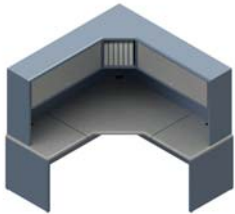
Part No.	CLASSIC HOODS	Price
CTH3232	LOW PROFILE DIAGONAL HOOD (18" TALL)	333.00
CTH3232-36	LOW PROFILE DIAGONAL HOOD (36" TALL)	450.00
CTCH-39	39" CLASSIC HOOD FOR 2' RETURN (18" TALL)	545.00
CTCH-51	51" CLASSIC HOOD FOR 3' RETURN (18" TALL)	581.00
CTCH-63	63" CLASSIC HOOD FOR 4' RETURN (18" TALL)	617.00
CTCH-75	75" CLASSIC HOOD FOR 5' RETURN (18" TALL)	581.00
CTCH-3936	39" CLASSIC HOOD FOR 2' RETURN (36" TALL)	520.00
CTCH-5136	51" CLASSIC HOOD FOR 3' RETURN (36" TALL)	550.00
CTCH-6336	63" CLASSIC HOOD FOR 4' RETURN (36" TALL)	580.00
CTCH-7536	75" CLASSIC HOOD FOR 5' RETURN (36" TALL)	610.00

SITS ON WORKSURFACE OF MODULAR FURNITURE



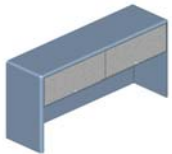
Part No.	CLASSIC STORAGE HOODS	Price
CTCH-39S	39" CLASSIC STORAGE HOOD FOR 2' RETURN (18" TALL)	835.00
CTCH-51S	51" CLASSIC STORAGE HOOD FOR 3' RETURN (18" TALL)	908.00
CTCH-63S	63" CLASSIC STORAGE HOOD FOR 4' RETURN (18" TALL)	980.00
CTCH-75S	75" CLASSIC STORAGE HOOD FOR 5' RETURN (18" TALL)	870.00
CTCH-39S36	39" CLASSIC STORAGE HOOD FOR 2' RETURN (36" TALL)	795.00
CTCH-51S36	51" CLASSIC STORAGE HOOD FOR 3' RETURN (36" TALL)	855.00
CTCH-63S36	63" CLASSIC STORAGE HOOD FOR 4' RETURN (36" TALL)	915.00
CTCH-75S36	75" CLASSIC STORAGE HOOD FOR 5' RETURN (36" TALL)	975.00
FLOCK	FACE LOCK	27.50

STORAGE HOODS CAN BE ORDERED WITH EITHER FLIPPER OR OPTIONAL SLIDING DOORS FOR THE SAME PRICE.  
SITS ON WORKSURFACE OF MODULAR FURNITURE



Part No.	CROSSTALK MODULAR WORKSTATIONS	Price
CRL	6' L-SHAPE CROSSTALK WORKSTATION	4,653.00
CRL-L	6' L-SHAPE CROSSTALK WORKSTATION (LEFT SLOPE HOOD)	4,653.00
CRL-R	6' L-SHAPE CROSSTALK WORKSTATION (RIGHT SLOPE HOOD)	4,653.00
CRL-F	6' L-SHAPE CROSSTALK WORKSTATION (FLUSH HOODS)	4,653.00
8-OCT	8' OCTAGONAL CROSSTALK HOODED WORKSTATION	11,974.00
9-OCT	9' OCTAGONAL CROSSTALK HOODED WORKSTATION	13,305.00
OCT10	10' OCTAGONAL CROSSTALK HOODED WORKSTATION	11,995.00
OCT11	11' OCTAGONAL CROSSTALK HOODED WORKSTATION	12,995.00
OCT12	12' OCTAGONAL CROSSTALK HOODED WORKSTATION	13,995.00
PEDLOCK	PEDESTAL LOCK	145.00
CR-FAB	TACKABLE FABRIC PANEL	200.00

CROSSTALK WORKSTATIONS INCLUDE L-SHAPE DESK, FLIPPER-DOOR HUTCHES, CABLE MANAGEMENT, AND POWER STRIPS



Part No.	FLIPPER-DOOR HUTCHES	Price
ADMH-48	4' ADMINISTRATIVE FLIPPER-DOOR HUTCH (36" TALL)	1,100.00
ADMH-60	5' ADMINISTRATIVE FLIPPER-DOOR HUTCH (36" TALL)	1,210.00
ADMH-72	6' ADMINISTRATIVE FLIPPER-DOOR HUTCH (36" TALL)	1,597.00
ADMH-84	7' ADMINISTRATIVE FLIPPER-DOOR HUTCH (36" TALL)	1,730.00
ADMH-96	8' ADMINISTRATIVE FLIPPER-DOOR HUTCH (36" TALL)	1,863.00
CR-FAB	TACKABLE ACOUSTIC FABRIC PANEL (PER PANEL)	200.00



Part No.	DESKS	Price
EXEC-6	6' EXECUTIVE DESK WITH STORAGE PEDESTALS	2,393.00
EXEC-7	7' EXECUTIVE DESK WITH STORAGE PEDESTALS	2,463.00
EXEC-8	8' EXECUTIVE DESK WITH STORAGE PEDESTALS	2,536.00
ADM-72	6' ADMINISTRATIVE DESK WITH STORAGE PEDESTAL	1,918.00
ADM-84	7' ADMINISTRATIVE DESK WITH STORAGE PEDESTAL	2,027.00
ADM-96	8' ADMINISTRATIVE DESK WITH STORAGE PEDESTAL	2,536.00



Part No.	TRANSITIONS	Price
ADMT-24	24" ADMINISTRATIVE TRANSITION	466.00
ADMT-36	36" ADMINISTRATIVE TRANSITION	700.00
ADMIN-42	42" ADMINISTRATIVE TRANSITION	768.00
ADMIN-48	48" ADMINISTRATIVE TRANSITION	980.00

TRANSITIONS ARE ATTACHED BETWEEN ADMINISTRATIVE DESKS AND CREDENZAS

# AMERICON COMMERCIAL FURNITURE AND ACCESSORIES CATALOG

## JULY 2019



Part No.	CREDENZAS	Price
ADMC-72	6' ADMINISTRATIVE CREDENZA	999.00
ADMC-84	7' ADMINISTRATIVE CREDENZA	1,084.00
ADMC-96	8' ADMINISTRATIVE CREDENZA	1,168.00
CRP6	6' CREDENZA WITH DUAL 3 DRAWER PEDESTALS/ENCLOSED SHELVING	2,118.00
DPI	TRIPLE BOX/BOX/FILE PEDESTAL ISLAND (54W" X 24D" 30"T)	1,537.00
CR3	3' CPU STORAGE CREDENZA WITH RETRACTABLE SHELVES	1,225.00
CR4	4' CPU STORAGE CREDENZA WITH RETRACTABLE SHELVES	1,350.00
CR5	5' CPU STORAGE CREDENZA WITH RETRACTABLE SHELVES	1,450.00
CR6	6' CPU STORAGE CREDENZA WITH RETRACTABLE SHELVES	1,682.00
ECR-48	4' DUAL 14 RU RACKMOUNT CREDENZA	1,350.00
ECR-60	5' DUAL 14 RU RACKMOUNT CREDENZA	1,450.00
ECR-72	6' TRIPLE 14 RU RACKMOUNT CREDENZA	1,550.00
FP36	3' FAX-PRINTER CREDENZA WITH ENCLOSED STORAGE	990.00
FP48	4' FAX-PRINTER CREDENZA WITH ENCLOSED STORAGE	1,320.00
FP60	5' FAX-PRINTER CREDENZA WITH ENCLOSED STORAGE	1,650.00
FP72	6' FAX-PRINTER CREDENZA WITH ENCLOSED STORAGE	1,980.00
PEDLOCK	PEDESTAL LOCK	145.00
FLOCK	FACELOCK	36.00

ALL EQUIPMENT STORAGE ENCLOSURES INCLUDE ADJUSTABLE GLIDES, VENTED DOORS AND ACTIVE EXHAUST SYSTEM.  
STANDARD CREDENZAS ARE 24" DEEP / FAX-PRINTER CABINETS ARE 30" DEEP

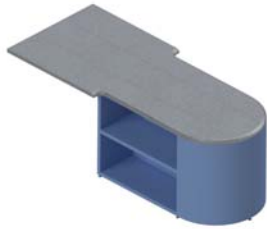
Part No.	SLATWALLS	Price
SLAT-2S	24" WIDE STANDARD SLATWALL (12"H)	250.00
SLAT-3S	36" WIDE STANDARD SLATWALL (12"H)	350.00
SLAT-4L	48" WIDE LOW PROFILE SLATWALL (12"H)	290.00
SLAT-4S	48" WIDE STANDARD SLATWALL (12"H)	436.00
SLAT-5L	60" WIDE LOW PROFILE SLATWALL (12"H)	436.00
SLAT-5S	60" WIDE STANDARD SLATWALL (12"H)	581.00
SLAT-6L	72" WIDE LOW PROFILE SLATWALL (12"H)	581.00
SLAT-6S	72" WIDE STANDARD SLATWALL (12"H)	726.00
SLAT-7L	84" WIDE LOW PROFILE SLATWALL (12"H)	726.00
SLAT-7S	84" WIDE STANDARD SLATWALL (12"H)	850.00
SLAT-8L	96" WIDE LOW PROFILE SLATWALL (12"H)	850.00
SLAT-8S	96" WIDE STANDARD SLATWALL (12"H)	925.00
STANDARD LINEAR SLATWALLS FOR MOUNTING MONTIOR ARMS AND OTHER PERIPHERALS		
SLAT-2SH	24" WIDE ACOUSTICAL SLATWALL (18"H)	330.00
SLAT-3SH	36" WIDE ACOUSTICAL SLATWALL (18"H)	465.00
SLAT-4SH	48" WIDE ACOUSTICAL SLATWALL (18"H)	653.00
SLAT-5SH	60" WIDE ACOUSTICAL SLATWALL (18"H)	799.00
SLAT-6SH	72" WIDE ACOUSTICAL SLATWALL (18"H)	944.00
SLAT-7SH	84" WIDE ACOUSTICAL SLATWALL (18"H)	1,090.00
SLAT-8SH	96" WIDE ACOUSTICAL SLATWALL (18"H)	1,150.00
ACOUSTICAL SLATWALLS ARE 18" TALL AND INCLUDE TACKABLE FABRIC PANELS		
SLAT-2ST	24" WIDE HOLLOW CORE SLATWALL (13 1/4"H X 8"D)	400.00
SLAT-3ST	36" WIDE HOLLOW CORE SLATWALL (13 1/4"H X 8"D)	500.00
SLAT-4ST	48" WIDE HOLLOW CORE SLATWALL (13 1/4"H X 8"D)	600.00
SLAT-5ST	60" WIDE HOLLOW CORE SLATWALL (13 1/4"H X 8"D)	730.00
SLAT-6ST	72" WIDE HOLLOW CORE SLATWALL (13 1/4" H X 8"D)	860.00
SLAT-7ST	84" WIDE HOLLOW CORE SLATWALL (13 1/4" H X 8"D)	1,020.00
SLAT-8ST	96" WIDE HOLLOW CORE SLATWALL (13 1/4"H X 8"D)	1,100.00
STANDARD SLATWALLS FOR COCKPIT-STYLE WORKSTATIONS		
SLAT-1206	COCKPIT STYLE STANDARD SLATWALL FOR WK120-6	770.00
SLAT-1207	COCKPIT STYLE STANDARD SLATWALL FOR WK120-7	1,084.00
SLAT-1208	COCKPIT STYLE STANDARD SLATWALL FOR WK120-8	1,229.00
ACOUSTICAL SLATWALLS FOR COCKPIT-STYLE WORKSTATIONS		
SLAT-1206SH	COCKPIT-STYLE ACOUSTICAL SLATWALL FOR WK120-6	1,100.00
SLAT-1207SH	COCKPIT-STYLE ACOUSTICAL SLATWALL FOR WK120-7	1,301.00
SLAT-1208SH	COCKPIT-STYLE ACOUSTICAL SLATWALL FOR WK120-8	1,326.00
HOLLOW CORE SLATWALLS FOR COCKPIT-STYLE WORKSTATIONS		
SLAT-1206ST	COCKPIT-STYLE HOLLOW CORE SLATWALL FOR WK120-6	1,125.00
SLAT-1207ST	COCKPIT-STYLE HOLLOW CORE SLATWALL FOR WK120-7	1,250.00
SLAT-1208ST	COCKPIT-STYLE HOLLOW CORE SLATWALL FOR WK120-8	1,350.00
SLAT-1206STI	COCKPIT-STYLE 6" HOLLOW CORE INSERT FOR WK120-6	560.00
SLAT-1207STI	COCKPIT-STYLE 6" HOLLOW CORE INSERT FOR WK120-7	625.00
SLAT-1208STI	COCKPIT-STYLE 6" HOLLOW CORE INSERT FOR WK120-8	675.00

NOTES  
INSERTS INCREASE SLATWALL HEIGHT IN 6" INCREMENTS  
HOLLOW CORE SLATWALLS INCLUDE WIRE GROMMETS, ACTIVE EXHAUST SYSTEM & REAR ACCESS  
SLATWALL ACCESSORIES ARE PROPRIETARY TO AMERICON SLATWALLS



# AMERICON COMMERCIAL FURNITURE AND ACCESSORIES CATALOG

## JULY 2019



Part No.	PENINSULAS	Price
PEN30-36	30"W X 36"D PENINSULA	5,095.00
PEN30-48	30"W X 48"D PENINSULA	5,495.00
PEN30-60	30"W X 60"D PENINSULA	5,895.00
PEN30-72	30"W X 72"D PENINSULA	6,295.00
PEN30-84	30"W X 84"D PENINSULA	6,695.00
PEN30-96	30"W X 96"D PENINSULA	7,095.00
PEN36-42	36"W X 36"D PENINSULA	5,495.00
PEN36-48	36"W X 48"D PENINSULA	1,895.00
PEN36-60	36"W X 60"D PENINSULA	6,295.00
PEN36-72	36"W X 72"D PENINSULA	6,695.00
PEN36-84	36"W X 84"D PENINSULA	7,095.00
PEN36-96	36"W X 96"D PENINSULA	7,495.00

WIDTH IS THE DISTANCE BETWEEN ADJACENT WORKSTATIONS - DEPTH IS THE TOTAL DISTANCE FRONT TO BACK



Part No.	PENINSULAS WITH INTEGRATED DOCUMENT CAROUSEL	Price
PENCAR30-36	30"W X 36"D PENINSULA / DOCUMENT CAROUSEL	4,895.00
PENCAR30-48	30"W X 48"D PENINSULA / DOCUMENT CAROUSEL	5,295.00
PENCAR30-60	30"W X 60"D PENINSULA / DOCUMENT CAROUSEL	5,695.00
PENCAR30-72	30"W X 72"D PENINSULA / DOCUMENT CAROUSEL	6,095.00
PENCAR30-84	30"W X 84"D PENINSULA / DOCUMENT CAROUSEL	6,495.00
PENCAR30-96	30"W X 96"D PENINSULA / DOCUMENT CAROUSEL	6,895.00
PENCAR36-42	36"W X 42"D PENINSULA / DOCUMENT CAROUSEL	5,295.00
PENCAR36-48	36"W X 48"D PENINSULA / DOCUMENT CAROUSEL	1,895.00
PENCAR36-60	36"W X 60"D PENINSULA / DOCUMENT CAROUSEL	6,295.00
PENCAR36-72	36"W X 72"D PENINSULA / DOCUMENT CAROUSEL	6,695.00
PENCAR36-84	36"W X 84"D PENINSULA / DOCUMENT CAROUSEL	7,095.00
PENCAR36-96	36"W X 96"D PENINSULA / DOCUMENT CAROUSEL	7,495.00



Part No.	FREESTANDING COMPONENTS	Price
TDT-30	30" TEARDROP-SHAPED TRANSITION	2,699.00
TDT-36	36" TEARDROP-SHAPED TRANSITION	2,899.00
CSL-30	30" REVOLVING DOCUMENT CAROUSEL	4,151.00
CSL-36	36" REVOLVING DOCUMENT CAROUSEL	4,351.00
PD2	FREESTANDING TWO-DRAWER PEDESTAL	515.00
PD2M	MOBILE TWO DRAWER PEDESTAL	545.00
PD3	FREESTANDING THREE-DRAWER PEDESTAL	545.00
PD3M	MOBILE THREE DRAWER PEDESTAL	575.00
PDL	TWO-DRAWER LATERAL FILE (30"W X 24"D X 30"H)	600.00
LAT-60	FOUR-DRAWER LATERAL FILE (60"W X 24"D X 30"H)	995.00
DPD2	DOUBLE TWO DRAWER PEDESTAL	1,023.00
DPD3	DOUBLE THREE DRAWER PEDESTAL	1,096.00
DPD23	COMBINATION PEDESTAL (TWO DRAWER & THREE DRAWER)	1,056.00
CPU	CPU CABINET	660.00
PRT	PRINTER CABINET	660.00
FSSTOR18	FREESTANDING STORAGE CABINET (18" W X 24D X 30"H)	475.00
FSSTOR24	FREESTANDING STORAGE CABINET (24" W X 24D X 30"H)	550.00
FSSTOR36	FREESTANDING STORAGE CABINET (36" W X 24D X 30"H)	625.00
CPUDR	CPU CABINET WITH BOX DRAWER	695.00
CPU2	DUAL CPU CABINET	745.00
CPU2DR	CPU CABINET WITH BOX DRAWER	895.00

ALL FREESTANDING COMPONENTS ARE FULLY FINISHED  
ALL CPU STORAGE CABINETS INCLUDE EXHAUST FANS AND RETRACTABLE DRAWERS



Part No.	ELECTRONIC ENCLOSURES	Price
LC111-X	SINGLE 34RU ELECTRONICS ENCLOSURE (FOUR RETRACTABLE SHELVES)	2,195.00
LC111-XM	DUAL 34RU ELECTRONICS ENCLOSURE (EIGHT RETRACTABLE SHELVES)	4,387.00
RCS	RETRACTABLE CPU SHELF	237.00
EIA-40	EIA RACKMOUNT KIT(40 RU)	850.00

ELECTRONIC ENCLOSURES INCLUDE DROP-DOWN STANDOFFS AND HEAVY-RATED CASTERS  
EXHAUST FANS, ACRYLIC GLASS DOORS, REAR ACCESS DOORS AND POWER STRIPS.



Part No.	REFERENCE DESKS	Price
TB4260	"T" BASE REFERENCE DESK(42"W X 60"L X 30"T)	1,995.00
TB4272	"T" BASE REFERENCE DESK(42"W X 72"L X 30"T)	2,495.00
TB4284	"T" BASE REFERENCE DESK (42"W X 84"L X 30"T)	2,995.00
TB4296	"T" BASE REFERENCE DESK (42"W X 96"L X 30"T)	3,495.00
TB42108	"T" BASE REFERENCE DESK (42"W X 108"L X 30"T)	3,995.00
TB42120	"T" BASE REFERENCE DESK (42"W X 120"L X 30"T)	4,495.00
46OCT	4' X 6' OCTAGONAL REFERENCE DESK	3,625.00
46OCT-M	4' X 6' OCTAGONAL REFERENCE DESK WITH MANUAL BRIDGE	4,109.00
58OCT	5' X 8' OCTAGONAL REFERENCE DESK	4,230.00
58OCT-M	5' X 8' OCTAGONAL REFERENCE DESK WITH MANUAL BRIDGE	4,714.00

**AMERICON COMMERCIAL FURNITURE AND ACCESSORIES CATALOG  
JULY 2019**

**ACCESSORIES**

**KEYBOARDS**

KB-ART	ARTICULATING KEYBOARD PLATFORM	297.00
KBM-ART	ARTICULATING KEYBOARD & MOUSE PLATFORM	399.00
KBM-DS	KEYBOARD/MOUSE DRAWER WITH DOCKING STATION STORAGE	495.00
KBM-STOR	ARTICULATING KEYBOARD & MOUSE PLATFORM / PEN AND PENCIL STORAGE	425.00
KMWM	KEYBOARD/MOUSE WALL MOUNT STORAGE	129.00
PD	PENCIL DRAWER	254.00
WBPD	PENCIL DRAWER WITH WRITING BOARD	333.00

**CABINET ACCESSORIES**

FAN	EXHAUST FAN KIT (4" FAN/FINGER GUARDS/PLUG/CORD)	182.00
EIA	EIA RACKMOUNT KIT (14 RU)	515.00
EIA-8	EIA RACKMOUNT KIT (8 RU)	495.00
EIA-17	EIA RACKMOUNT KIT (17 RU)	600.00
EIA-27	EIA RACKMOUNT KIT (27 RU)	770.00
FLOCK	FACE LOCK KIT	36.00
PEDLOCK	PEDESTAL GANG LOCK KIT	145.00
RCS	RETRACTABLE CPU SHELF	237.00
RMS1	RACKMOUNT SHELF (1 RU)	120.00
RMS2	RACKMOUNT SHELF (2 RU)	150.00
RMS3	RACKMOUNT SHELF (3 RU)	175.00
CPUD	CPU DOOR RACK	212.00

**SLATWALL ACCESSORIES**

SLATWALL ACCESSORIES ARE PROPRIETARY TO AMERICON SLATWALLS

8026-58	OMNI-TRAK INTERFACE BRACKET	109.00
AM-8246-104	SLATWALL INTERFACE BRACKET	105.00
AM-8246-102	GROMMET MOUNT BRACKET	105.00
AM-SWPHMT	SLATWALL PHONE MOUNT	105.00
AM-SWTRAY	SLATWALL PAPER TRAY	105.00
AM-SWMAN	SLATWALL MANUAL STORAGE TRAY	105.00
AM-35PHMT	ARTICULATING SLATWALL PHONE MOUNT	468.00
AM-35	18" ARTICULATING MONITOR ARM (SINGLE SCREEN, DUAL PIVOT)	358.00
AM-70	24" ARTICULATING MONITOR ARM (SINGLE SCREEN, DUAL PIVOT)	396.00
AM-70H	24" ARTICULATING MONITOR ARM (SINGLE SCREEN, DUAL PIVOT) Heavy Rated	456.00
AM-75	27" ARTICULATING MONITOR ARM (SINGLE SCREEN, DUAL PIVOT)	506.00
AM-75H	27" ARTICULATING MONITOR ARM (SINGLE SCREEN, DUAL PIVOT) Heavy Rated	510.00
AM-75W	27" ARTICULATING MONITOR ARM (DUAL SCREEN, DUAL PIVOT)	732.00
AM-12SPM	SINGLE MONITOR POLE MOUNT WITH 14" POLE	358.00
AM-24PMV	DUAL MONITOR POLE MOUNT(OVER/UNDER) WITH 28" POLE	484.00
AM-12PMH	DUAL MONITOR POLE MOUNT (SIDE BY SIDE) WITH 14" POLE	490.00
AM-24PMH	QUAD MONITOR MOUNT WITH 28" POLE	1,579.00
AM-ARC2	DUAL STATIONARY MONITOR ARC	457.00
AM-ARC3	TRIPLE STATIONARY MONITOR ARC	622.00
AM-ARC4	QUAD STATIONARY MONITOR ARC	836.00
AM-SW51	SLATWALL COMMUNICATIONS PANEL (POWER & DATA)	385.00
SSB	SLATWALL MOUNTED SIEMENS SPEAKER BOX	495.00

**AMERICON COMMERCIAL FURNITURE AND ACCESSORIES CATALOG  
JULY 2019**

**ENVIRONMENTAL SOLUTIONS**

PES	PERSONAL ENVIRONMENT SYSTEM	3,504.00
PWM-1000	PERSONAL WORKSPACE MANAGER (INCLUDES FOOT WARMER/POWER OUTLETS/USB PORTS)	2,850.00
RADHT-111	RADIANT HEAT PANEL	200.00

**LIGHTING**

2FLT	2' LED HOOD LIGHTING	182.00
3FLT	3' LED HOOD LIGHTING	290.00
4FLT	4' LED HOOD LIGHTING	399.00
5FLT	5' LED HOOD LIGHTING	508.00
6FLT	6' LED HOOD LIGHTING	617.00
G213	ARTICULATING DIMMABLE LED TASK LIGHT WITH SLATWALL BRACKET	424.00

**DECORATIVE END PANELS**

LOGO-P	ENGRAVED LOGO PROGRAMMING AND PREPARATION CHARGE	750.00
LOGO	LOGO END PANEL	500.00
DECCO	DECORATIVE END PANEL	500.00

**WORKSTATION AND TABLETOP ACCESSORIES**

AM-TP21	TILT-UP MULTIMEDIA HUB	875.00
AM-TP51	TILT-UP COMMUNICATIONS HUB	435.00
TUR1	1 TO 3 RU DESKTOP TURRET	495.00
TUR2	4 TO 6 RU DESKTOP TURRET	795.00
TUR3	7 TO 9 RU DESKTOP TURRET	995.00
TUR4	10 TO 12 RU DESKTOP TURRET	1,195.00
TURS	SIEMENS SPEAKER TURRET	595.00
ACR18	ACRYLIC INSERT (18"W X 16"D)	250.00
ACR27-41	ACRYLIC INSERT (27"W-41"W X 16"D)	350.00
ACR42-59	ACRYLIC INSERT (42"W-59"W X 16"D)	450.00
ACR42-60	ACRYLIC INSERT (60"W-72"W X 16"D)	550.00

## Our Materials

Our coverings are not the traditional high pressure plastic laminate used by most manufacturers. We have developed a special thermal-fused product that is thicker than standard laminates but maintains the same wear-ability. This product has many times the impact resistance and can cover free-formed designs and edge details without the use of unsightly bumper molding found in our competitor's products. Our products are virtually impossible to chip since there are no sharp edges or corners. The process for applying the material utilizes both heat and suction to form a hermetically-sealed envelope that creates a barrier against the effects of temperature and moisture. Since we also utilize this same material on our side panels, custom engraved logos and designer end panels are easily achievable. Our worksurface backers are phenolic and have the same tough characteristics as high pressure laminate.

**ORDERING INFORMATION**

***AMERICON***

900 Flynn Road Camarillo, CA 93012  
Phone (805) 987-0412 - Fax (805) 987-1829  
sales@americon-usa.com

*AMERICON WEBSITES*

*AMERICON-USA.COM – WORKSTATIONS-USA.COM – VISIONMASTER-USA.COM*

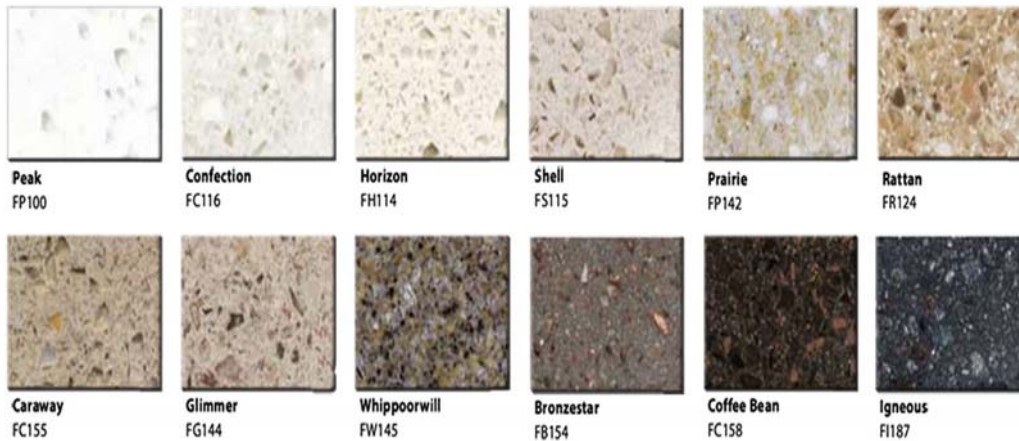
# STANDARD COLORS AND PATTERNS

## Laminate Colors and Patterns

Most of our clients select a solid color for the product base and a pattern for the worksurface



*Textured Black*



## Cultured Stone Worksurfaces

We offer an option to manufacture the worksurface using a solid surface material that has the look and feel of real granite. Note that cultured stone is cost upgrade to our standard high-quality laminate surfaces.

## LIMITED WARRANTY

Americon warrants the products that it manufactures to be free from defects in materials and workmanship for a period of one year from the date of sale. Americon warrants all metal frame components for the lifetime of the product. Normal wear and tear of products and/or neglect and abuse are the sole responsibility of the owner. Americon at its own discretion will determine whether to remedy claims by repair or replacement. Repairs and/or replacement are specifically performed to fulfill the warranty period obligation and in no way extend warranty life past the originally warranty period. Americon takes no responsibility for the repair or replacement of any products that are damaged through abuse, neglect, improper use, alteration or the result of freight or handling except when products are in our control. Americon at its own discretion may charge for servicing, repair and/or replacement of goods damaged through the above mentioned circumstances.

All warranties for electronic equipment supplied by Americon are covered by the terms and conditions set forth by the individual original equipment manufacturer. Unless otherwise agreed, these warranties supersede Americon's standard warranties. If a service contract is not in place, the responsibility for site removal, inbound and outbound freight along with down time are limited to the individual manufacturer's warranty. Most electronics manufacturers do not provide onsite warranties; therefore, the client takes responsibility for sending equipment back to the manufacturer and reinstalling items upon their return. The "Client" may acquire from Americon a contract to extend warranties past those of the original equipment manufacturers. The "Client" may also acquire a service contract to diagnose problems, affect the repairs and provide the services enumerated above which are normally the responsibility of the client. If a service contract is not in place, Americon can also provide services on a case by case basis which many times is more cost effective than a service contract based on the age of the equipment.

### Definitions:

- Warranty means the manufacturer warrants its products to be free from defects in material and workmanship for a specified period of time.
- Service is a contract to perform services that are normally the responsibility of the owner and not covered under a product warranty. These may be services such as diagnostics, repair, removal, installation, shipping and/or receiving goods.